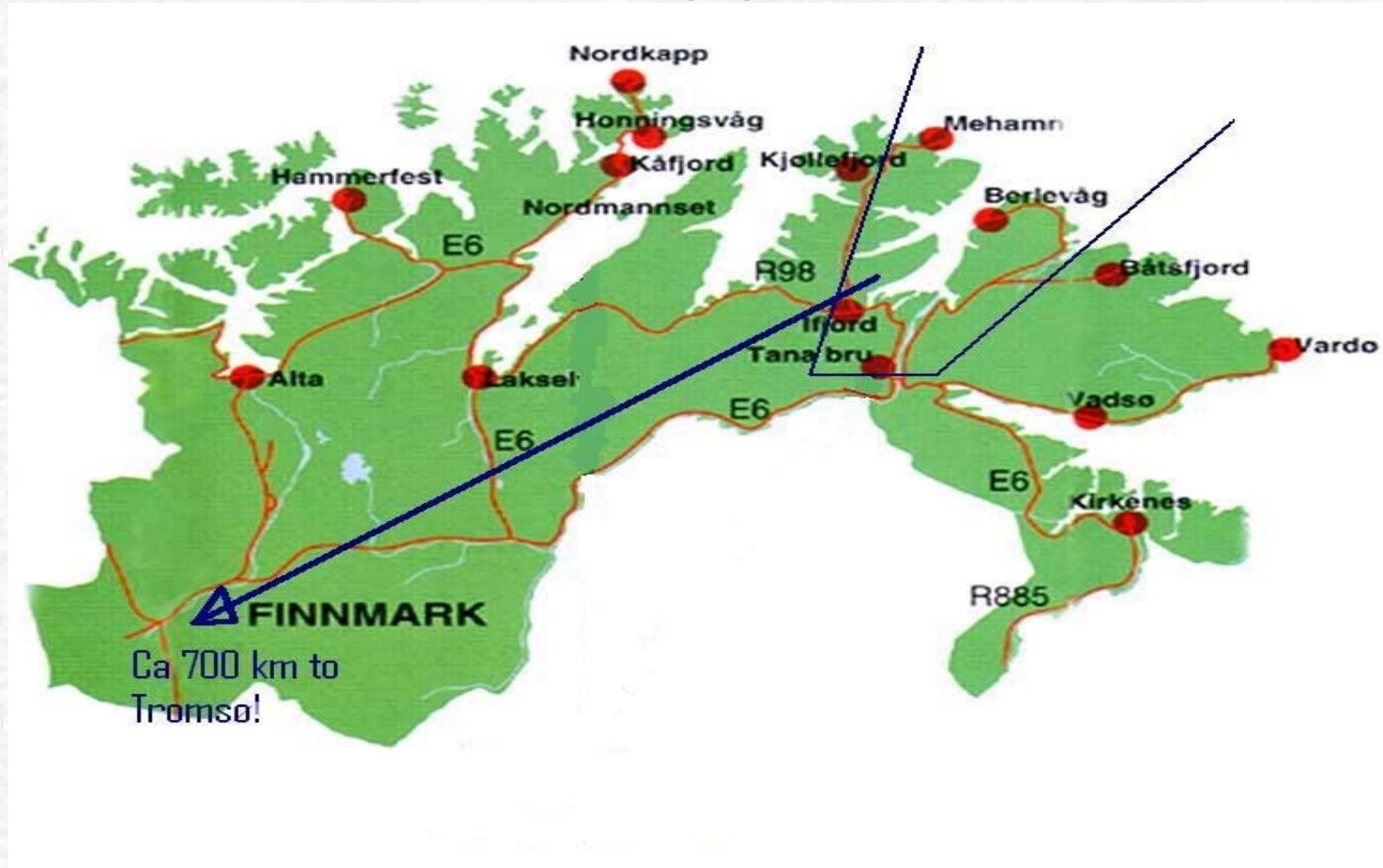


Tana



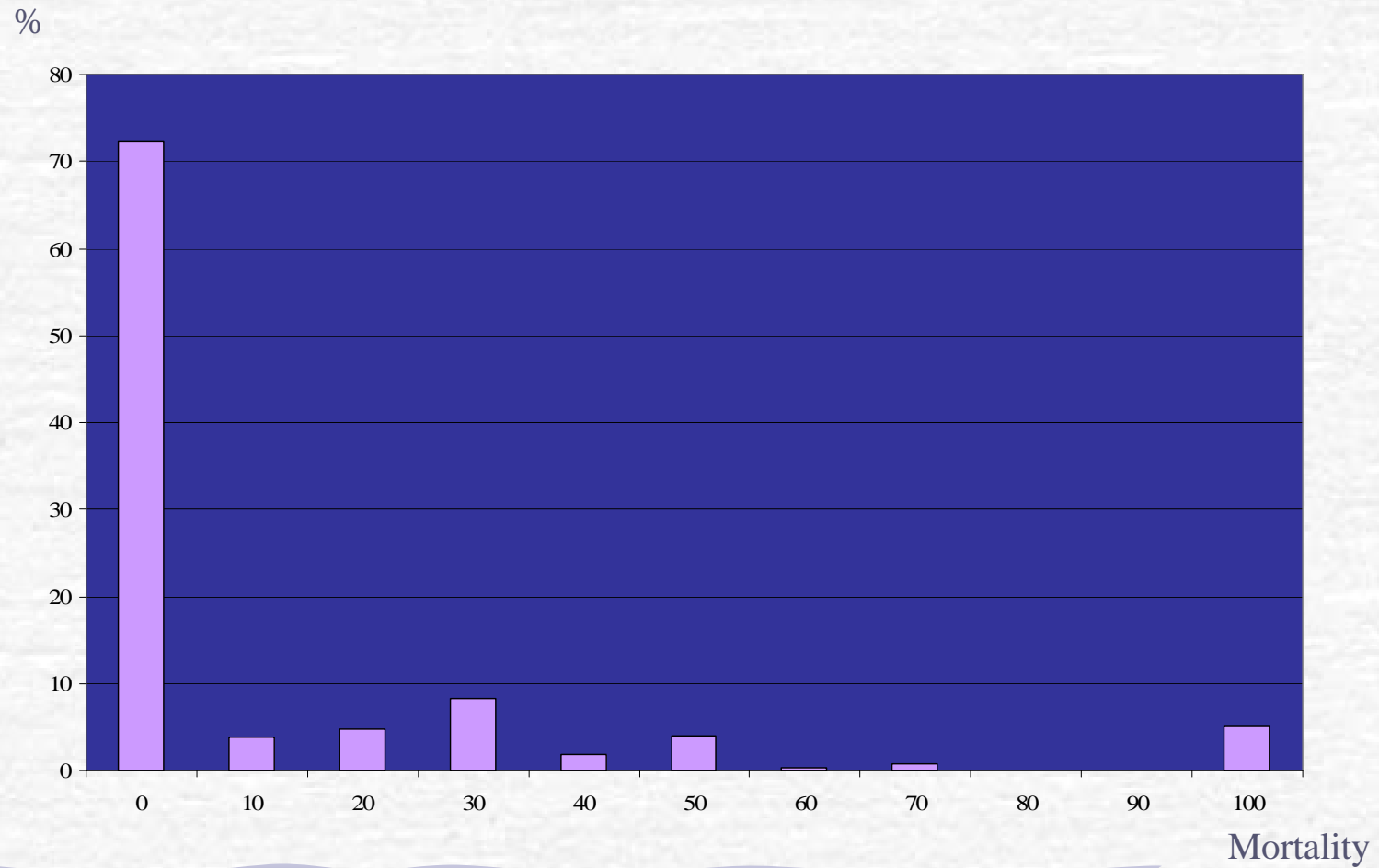
Autumn in Gavesluft near the Tana river



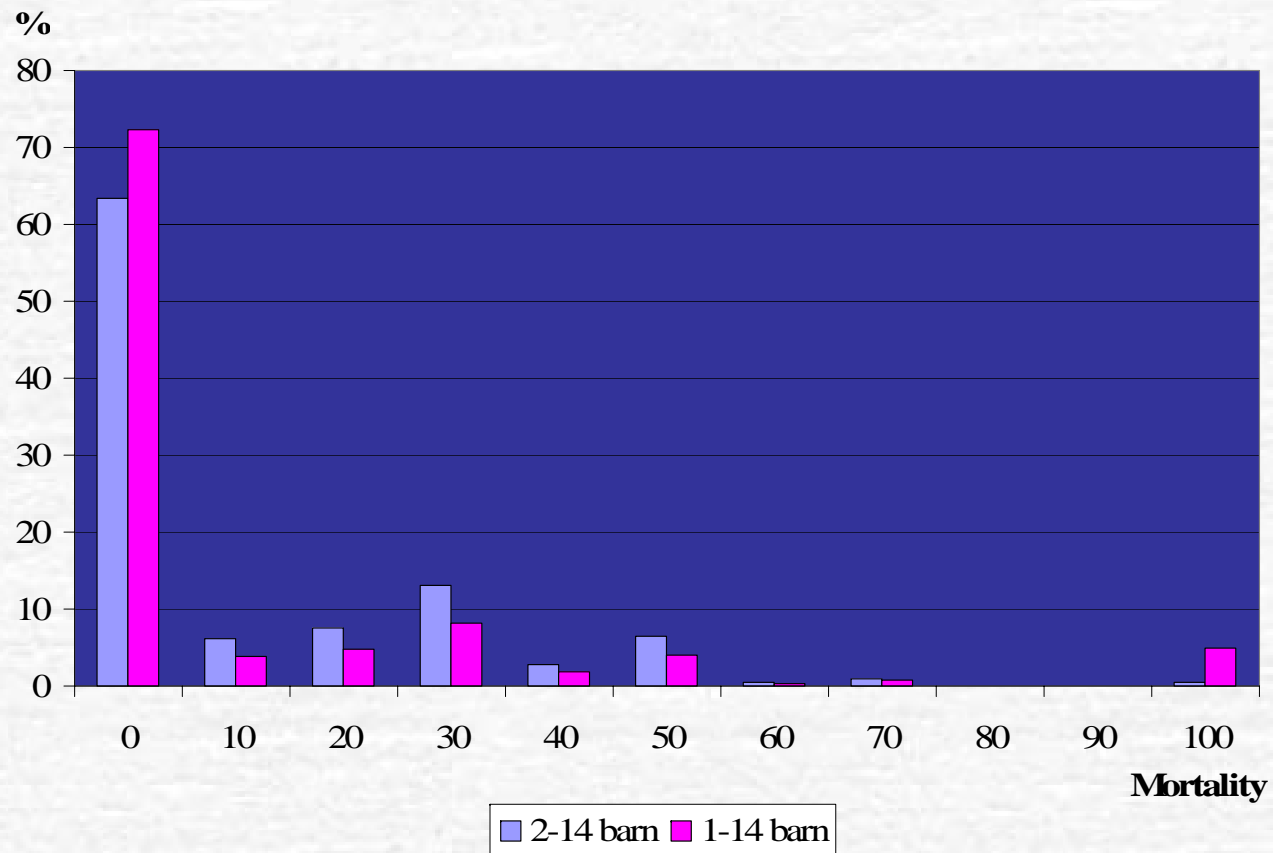
A small oasis with ruins from an old settlement



Infant mortality in Tana 1840-1914, on family level



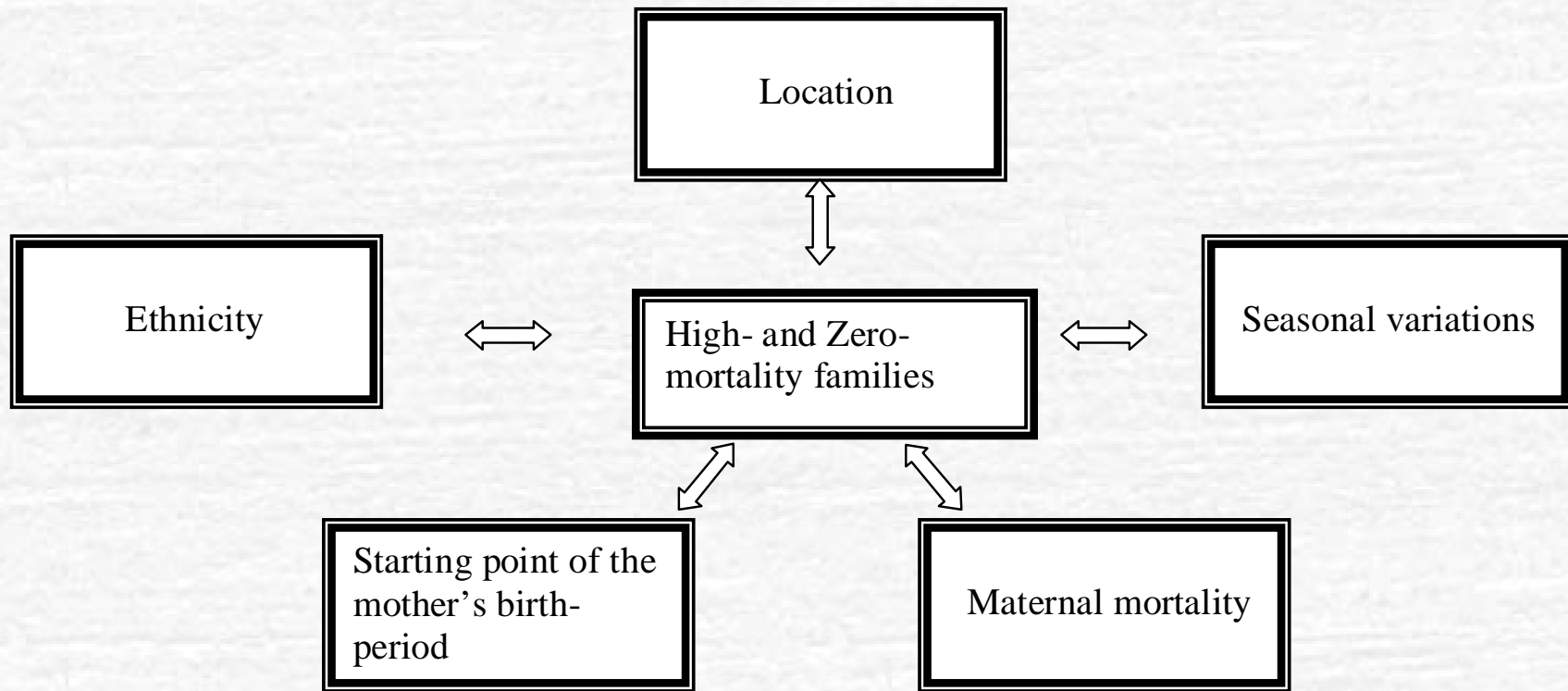
Infant mortality in Tana 1840-1914, on family level



The 578 mothers of both groups

Infant mortality=0%	Infant mortality <50%	Infant mortality >50%
548	286	30

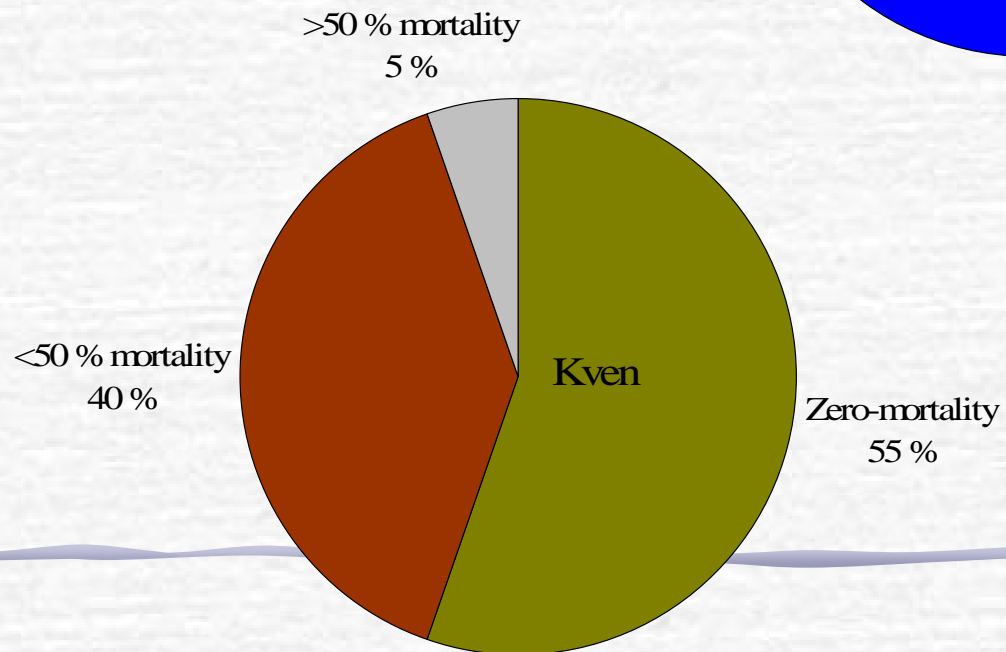
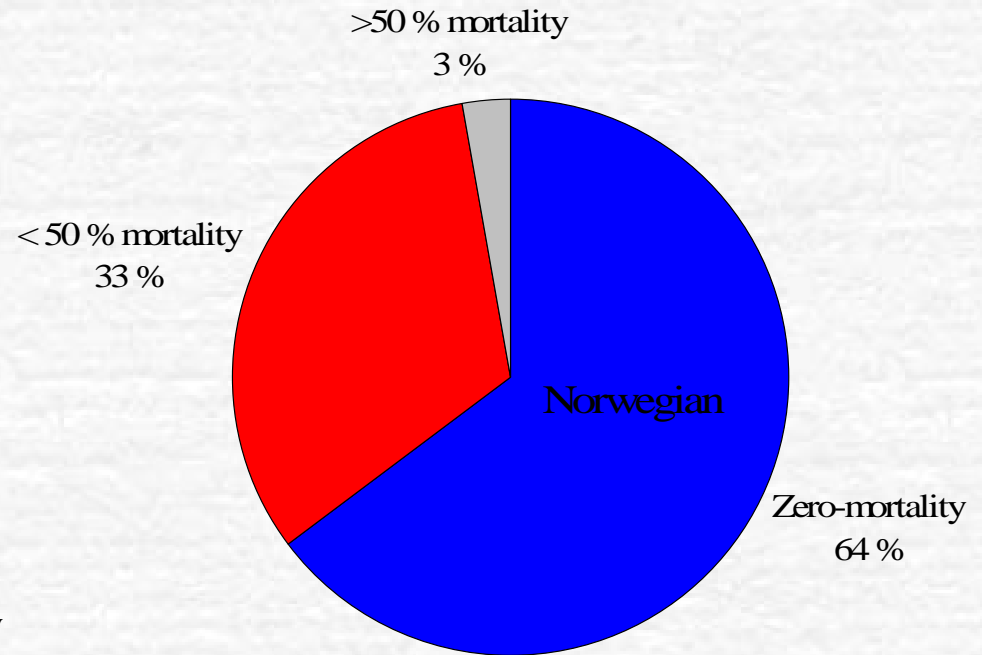
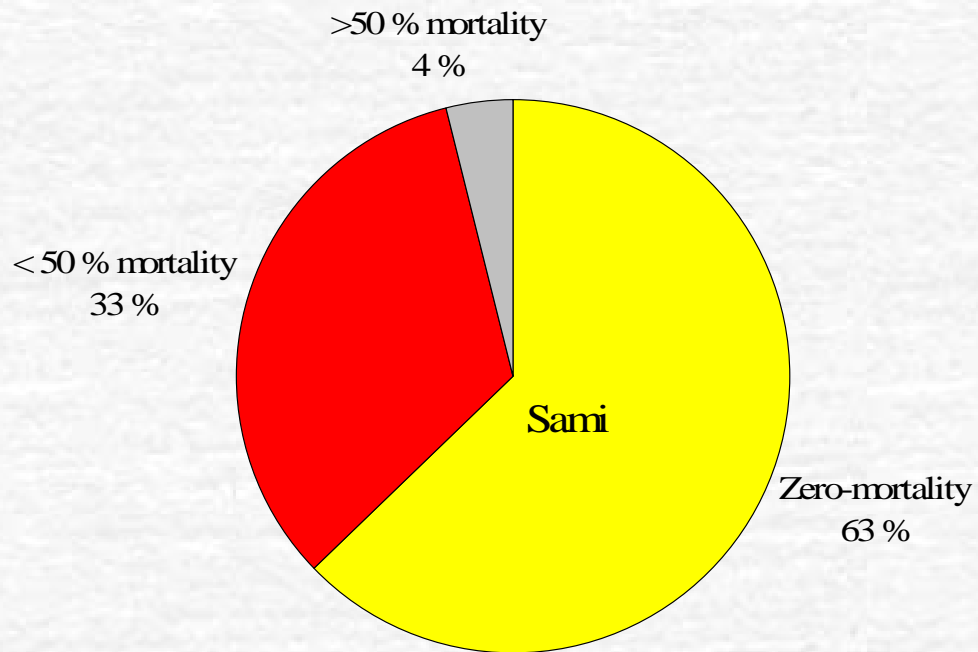
Studied factors



The amount of zero-mortality-families and high-mortality-families in Tana 1840-1884 and 1885-1914. Absolute numbers and percent.

Period	High-mortality-group		Zero-mortality-group		Sum	
1840-1884	20	6,3 %	298	93,7 %	318	100 %
1885-1914	10	3,8 %	250	96,2 %	260	100 %
Sum	30		548		578	

Infant mortality in ethnics categories



Infant mortality in high-mortality families after birthmonth

